

40 PAGE COMIC BOOK + SCHOOL RESOURCES COMING SOON!
SIGN UP TO OUR LATEST GREATEST NEWS AT WWW.GETKIDSINTOSURVEY.COM



GEO SQUAD



...a team for today - fighting to save tomorrow!

CHAPTER ONE

WEST PARK HIGH SCHOOL, MIDDLETOWN, PRESENT DAY...



CAREERS DAY...
WHERE DREAMS
COME TO DIE.

I'M STRUGGLING
TO FIND THE STAND
FOR FUTURE
PROFESSIONAL
GLACIER-SURFING,
BASE-JUMPING
SHARK WRANGLERS?

...OR EXTRA-TERRESTRIAL
BIO-SCIENTISTS?

...OR EXTREME
ARCHAEOLOGISTS
WITH A KNACK FOR
SOLVING
RUBIK'S CUBES IN
UNDER THIRTY
SECONDS?

...OR DRONE RACING
PRO GAMERS WHO
ARE ABLE TO... WAIT.
HANG ON A MINUTE...

MADDISON WILLIAMS

SETSUKO TANAKA

KWAME ORUMO

MILES...



...WHAT'S
THIS
STAND ALL
ABOUT?

...DARWOOD!



THOSE DON'T WORK!
KIDS HAVE BEEN TRYING THEM
ALL MORNING!
COULD I INTEREST YOU IN A
CAREER IN... OH NEVERMIND.



HOW ODD -
THIS ONE'S
JUST TURNED
ON.

THIS ONE'S
STARTED
BLINKING TOO!

WHY WOULD THEY
START WORKING
NOW?

ERR... GUYS? YOU
MIGHT WANT TO
SEE THIS. OR NOT.



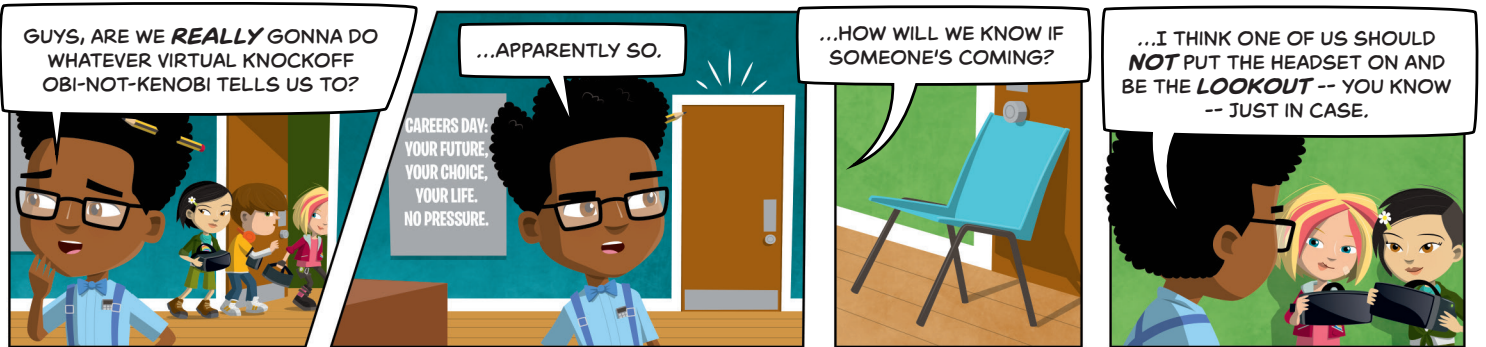
MIDDLETOWN, YEAR 2049

THIS IS SUPPOSED TO
BE **OUR** TOWN?
SOMEONE HAS A
VIVID IMAGINATION.
VIVID, AND **HORRIFIC**.

SUDDENLY, A MYSTERIOUS, CLOAKED
FIGURE MATERIALISES IN THE MIDST OF
THE CHAOS...



No-one ever imagined
this. This is **REAL**.
This is **YOUR** future...





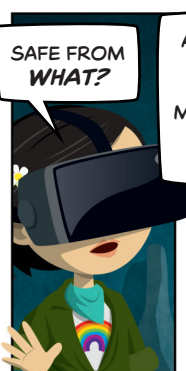
THIS IS SOMEONE'S HOME?



It WAS. It was the SURVEYOR'S SANCTUARY - the one place we were SAFE.



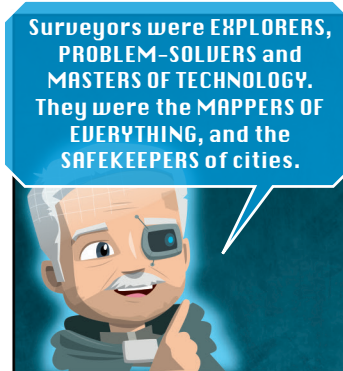
WHO'S WE?



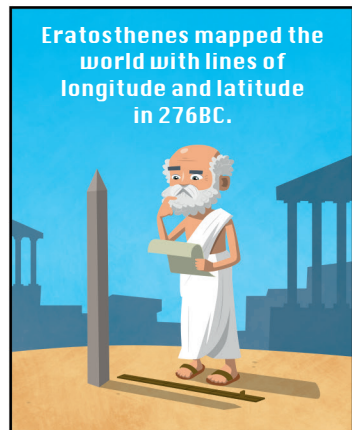
SAFE FROM WHAT?



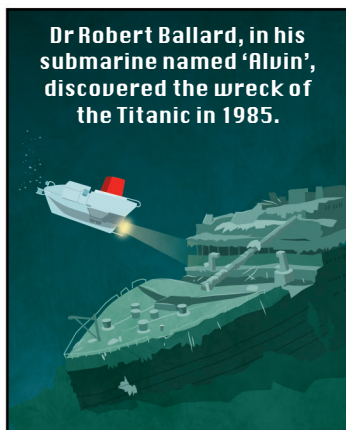
AND WHAT THE HECK IS A SURVEYOR? START THAT MOUSTACHE DANCING AND EXPLAIN ALL THIS!



Surveyors were EXPLORERS, PROBLEM-SOLVERS and MASTERS OF TECHNOLOGY. They were the MAPPERS OF EVERYTHING, and the SAFEKEEPERS of cities.



Eratosthenes mapped the world with lines of longitude and latitude in 276BC.



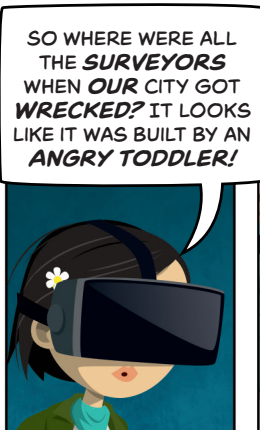
Dr Robert Ballard, in his submarine named 'Alvin', discovered the wreck of the Titanic in 1985.



Bradford Washburn's team planted a GPS receptor on the peak of Mount Everest in 1999 to measure its size.



Every one of these awe-inspiring buildings is the result, first and foremost, of the careful work of surveyors.



SO WHERE WERE ALL THE SURVEYORS WHEN OUR CITY GOT WRECKED? IT LOOKS LIKE IT WAS BUILT BY AN ANGRY TODDLER!



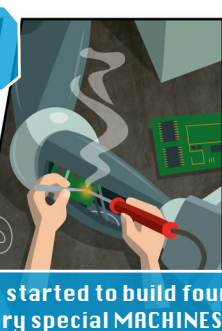
GREED took over. Reckless developers put up DANGEROUS buildings wherever they PLEASED.



Surveyors PROTESTED - but were SILENCED - until only I remained. I had to take ACTION...



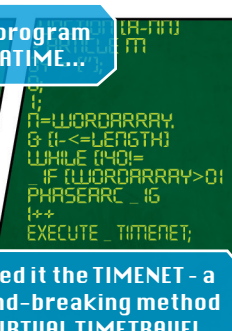
Using the TECHNOLOGY of the SURVEYORS...



...I started to build four, very special MACHINES.



I wrote a computer program to reach back in DATETIME...



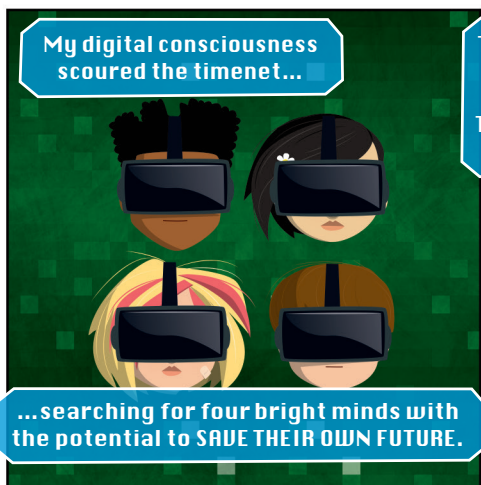
I called it the TIMENET - a ground-breaking method of VIRTUAL TIMETRAVEL



I built a vast supercomputer, hidden deep in this cave...



...and as my final human act, I uploaded my intelligence to the mainframe.



My digital consciousness scoured the timenet...



Today, I FOUND my four. You have the TALENT - I have the TOOLS...



...So - are you ready to SAVE THE FUTURE?

Well... that took less convincing than I anticipated.

WOOOM!

I'M CONTROLLING THIS THING **WITH MY MIND!** I JUST **THINK** IT AND IT **DOES** IT! HEY, ROBOT ME, FLY **LEFT!**

IT'S A **NEURAL CONNECTION** -- MUST BE PART OF THE **TIMENET SYSTEM**. I'VE GOT **SOOO** MANY QUESTIONS ABOUT THIS TECH.

YOUR **NERDY KNOWLEDGE HUNT** WILL HAVE TO WAIT, KWAME -- WE'RE COMING UP **FAST** ON THE CITY... AND IT'S IN A **BAD** WAY.

LOOK AT THIS PLACE - WHERE DO WE EVEN **START?** IT'S A TOTAL WREC... WAIT. **GUYS?** I THINK - I THINK THERE'S SOMEONE **INSIDE** MY **ROBOT'S HEAD!**

INDEED THERE IS! HELLO EVERYONE! IT'S SO NICE TO HAVE SOMEONE NEW TO TALK TO! ALLOW ME TO INTRODUCE MYSELF...

MY NAME IS **G.E.O G.I.N.G.E.R** - GENERAL EXPERT ON GLOBALLY INTEGRATED NETWORKED GEOGRAPHICAL ELECTRONIC RESOURCES. I AM YOUR VIRTUAL ASSISTANT. VERY PLEASSED TO MEET YOU ALL!

SO. MANY. QUESTIONS.

SO GEO-JARVIS - WHICH PART OF THE CITY THAT'S FALLING APART DO YOU THINK WE SHOULD HEAD TO FIRST?

IS ONE OF THEM '**WHY'S OUR VIRTUAL ASSISTANT'S NAME SO VERY LONG?**' BECAUSE IF IT ISN'T, IT SHOULD BE.

I HAVE PERFORMED A FULL SCAN USING THE **LIDAR** TECH INSIDE YOUR MECHS. I'LL PROJECT THE RESULTS ONTO THE CITY THROUGH YOUR **MIXED REALITY LENS**.

1 EXTREME EXTENSION - PROBABILITY OF COLLAPSE: 88%

2 DRUNK TOWER - HANGING ON BY A FRAYED THREAD

3 BLACK HOLE TUNNEL: SITE OF 23 ACCIDENTS... THIS WEEK

4 CONCRETE CHASM. HIGH RISK OF TURNING PEDESTRIANS INTO STREET MEAT

5 WEDGE ON A LEDGE. POTENTIALLY CATASTROPHIC OVERHANG

6 HOUSE HAZARD - STUCK ON WITH PVA GLUE AND GAFFER TAPE

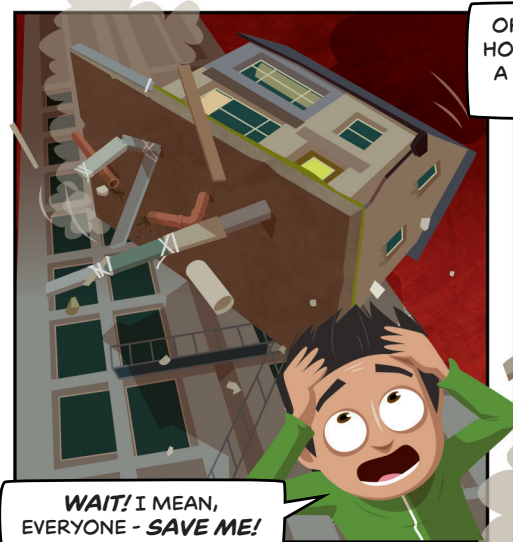
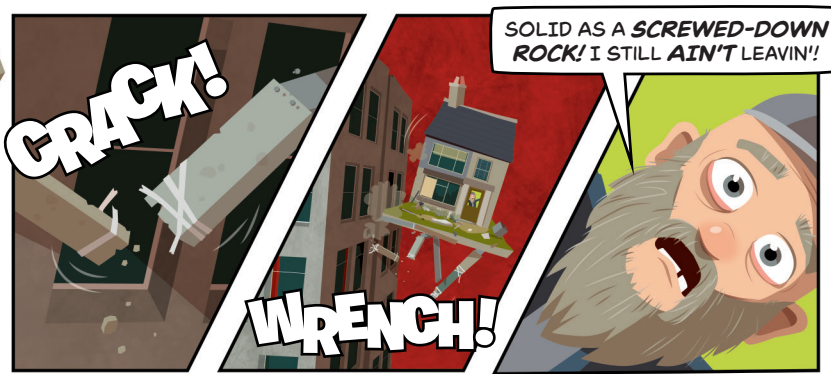
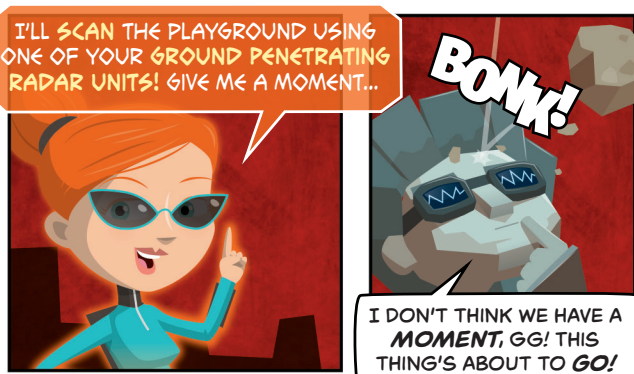
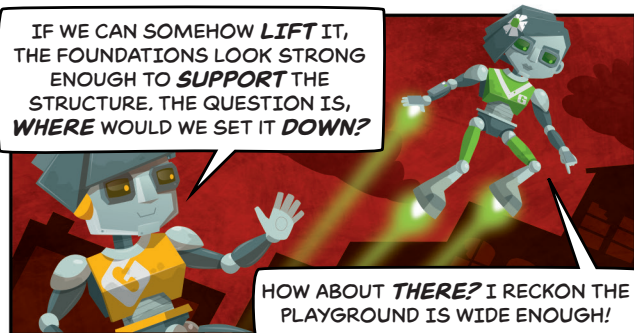
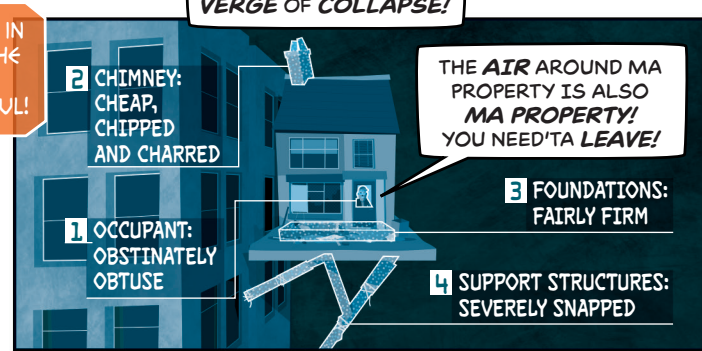
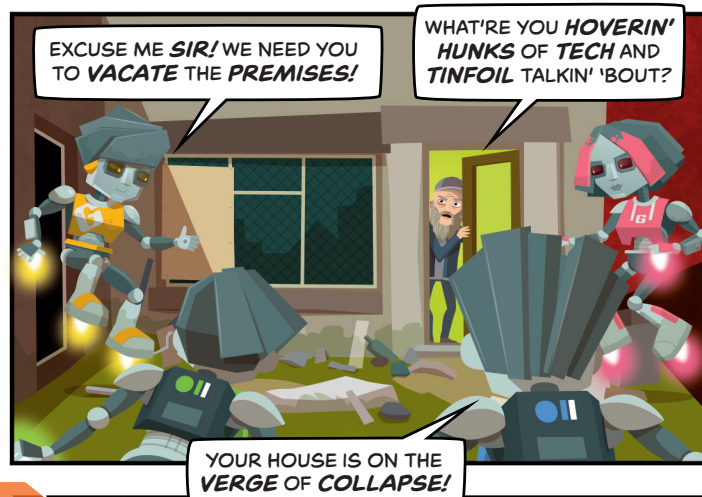
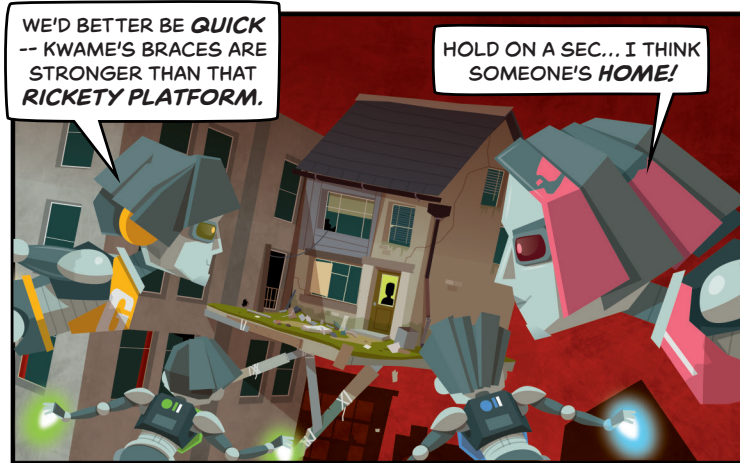
7 HIGHWAY TO HECK - SUPPORTED ENTIRELY BY FAULTY BEAMS

8 BUS-TED - NO-ONE HAS EVER CAUGHT A BUS AT THIS STOP.

HOW DID THINGS GET THIS **BAD?** AND HOW DO WE START TO **FIX** IT?

WELL - YOU COULD START BY SAVING YOUR SCHOOL - THAT HANGING HOUSE IS ABOUT TO FALL... RIGHT ON TOP OF IT.

WE'RE ON IT!





I THINK THESE **ROBOTS** HAVE BEEN **WORKING OUT!**

WITH **GREAT MIGHT**, COMES **GREAT PUBLIC DELIGHT!**

YOU **SAVED** OUR SCHOOL!



WHAT... WHO... WHO **ARE** YOU?

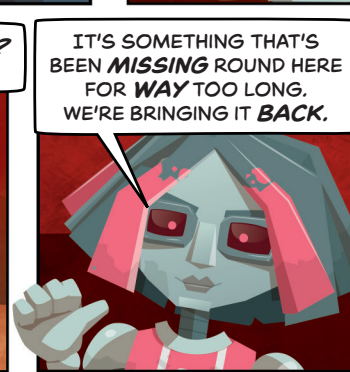


WE'RE THE **GEO SQUAD!**

AND WE'RE HERE TO **SURVEY, SAVE, AND SET THINGS RIGHT!**



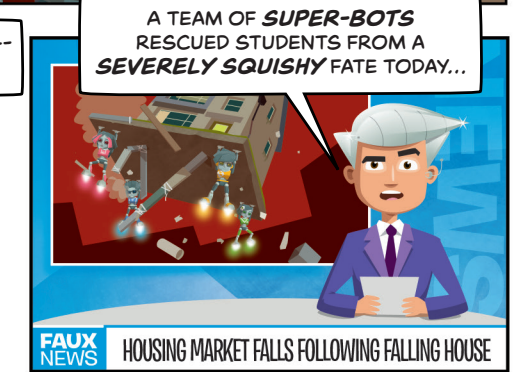
ERR... WHAT'S **SURVEY**? CAN I DO IT?



IT'S SOMETHING THAT'S BEEN **MISSING** ROUND HERE FOR **WAY** TOO LONG. WE'RE BRINGING IT **BACK**.

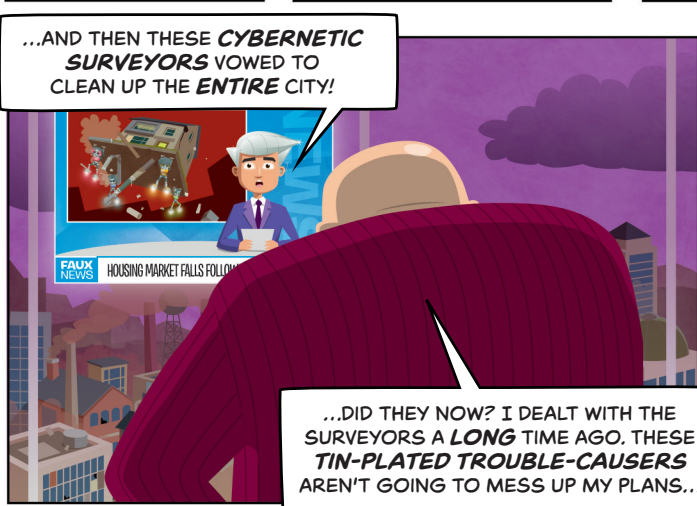


WE'RE GONNA **SAVE** THIS CITY-- AND WE WON'T STOP **THERE!**



A TEAM OF **SUPER-BOTS** RESCUED STUDENTS FROM A **SEVERELY SQUISHY** FATE TODAY...

FAUX NEWS HOUSING MARKET FALLS FOLLOWING FALLING HOUSE



...AND THEN THESE **CYBERNETIC SURVEYORS** VOWED TO CLEAN UP THE **ENTIRE CITY!**

...DID THEY NOW? I DEALT WITH THE SURVEYORS A **LONG** TIME AGO. THESE **TIN-PLATED TROUBLE-CAUSERS** AREN'T GOING TO MESS UP MY PLANS...



WHAT ARE THESE **GOGGLE-WEARING WEIRDOS** DOING? I'LL GO AND ASK THEM... WITH MY **FISTS**.

TO BE CONTINUED!

SPOT THE DIFFERENCE

Find the answers at:

www.getkidsintosurvey.com/comic

WELCOME TO THE **LAST SURVEYOR'S CAVE!** DEPENDING ON WHICH TIMENET PATH YOU TOOK, THERE ARE **TEN DIFFERENCES** BETWEEN THESE TWO SCENES. CAN YOU SPOT THEM ALL? KEEP AN EYE OUT FOR THE SPECIAL **SURVEY EQUIPMENT** DOTTED AROUND TOO...



Handheld
Laser
Scanner



Total
Station



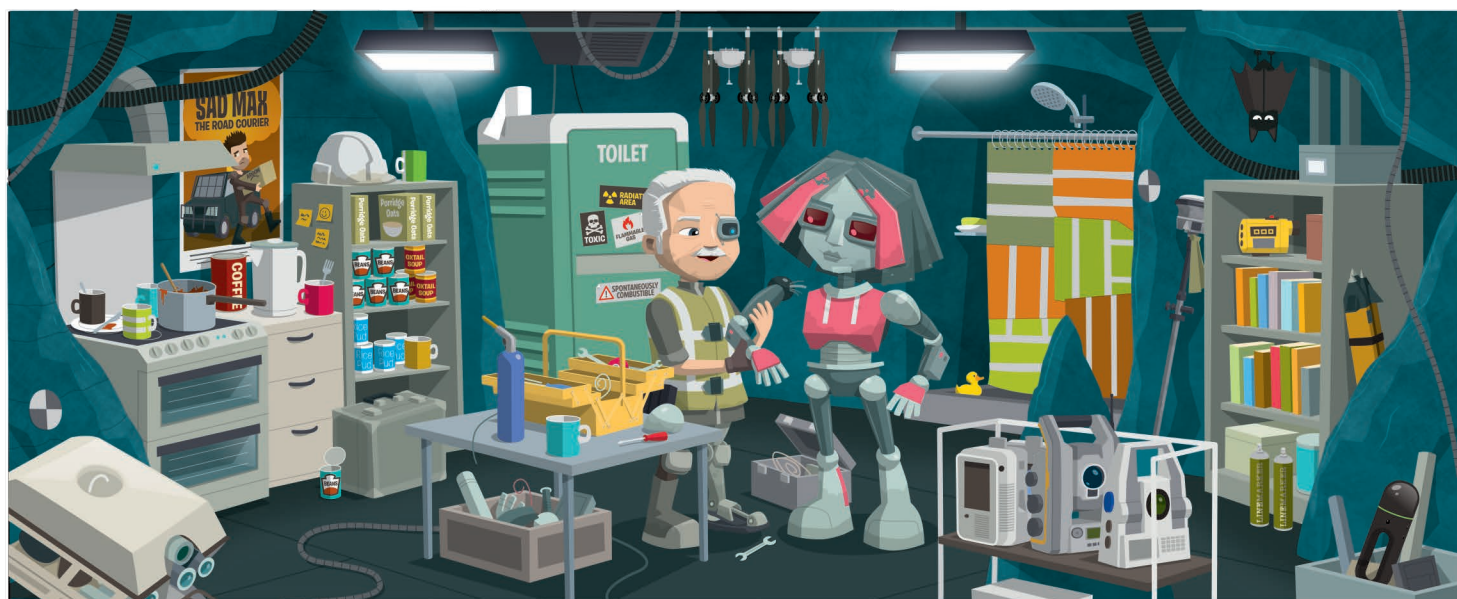
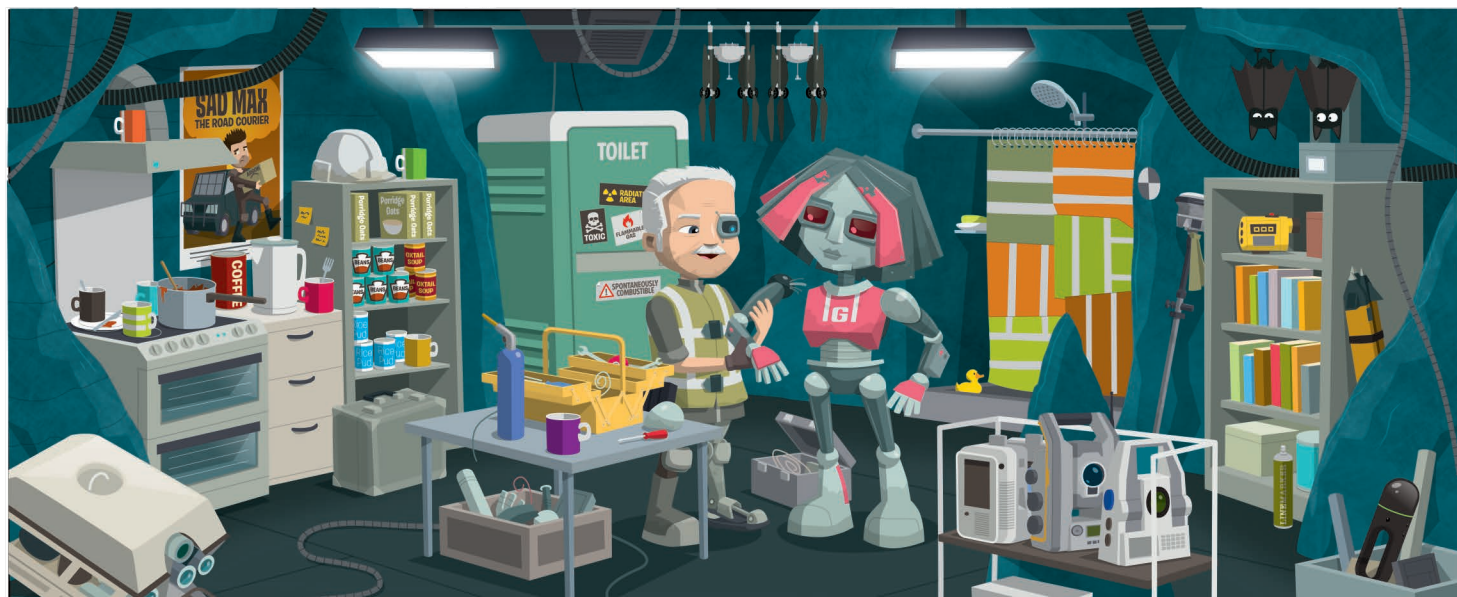
Laser
Range
Finder



Fold-up
Drone



Underwater
ROV



THANK YOU!

A special thank you to the **Institution of Civil Engineering Surveyors** and **Civil Engineering Surveyor magazine** for all the support and work you do for Get Kids into Survey. Thank you for being our UK & Europe poster distributors and publishing our comic strip every month in CES. And of course, thank you for this publication. We are forever grateful.

To our lovely sponsors for supporting our Comic Book initiative for getting it off the ground. A special mention goes to **Class of Your Own** and **TopoDOT** for sponsoring Chapter One.

Thank you to our **Brand Ambassadors** for proof reading the comic with your survey know how.

And finally, and this is a big one! Thank you to our Creative Team **Mathew Sullivan** and **Marek Jagucki** for producing the brilliant writing and artwork behind the whole project. You are the dream team and we couldn't have produced something so brilliant without you.

Kindly printed by:



www.getkidsintosurvey.com